



## Acme Sanitary Ware Co Ltd

Acme Building, 22-28 Nanking Street, Kowloon, Hong Kong



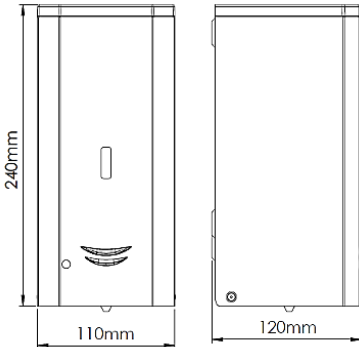





Tel: 2388 7171 Fax: 2710 8012

E-mail: acme@acmesanitary.com.hk

Website: www.acmesanitaryware.com.hk

PROJECT		REF		REV	ITEM CODE	
LOCATION		DATE			PAGE	

## SANITARY WARE SPECIFICATION SHEET

Item Descriptions	Mediclinics (Spain) stainless steel AISI 304 wall-mounted automatic foam soap dispenser in matte black epoxy finish AC supply	Illustration/ Drawing 												
Dimensions	L110 x W120 x H240 mm													
Model	DJF0038AB-TRAFO													
Material/ Finish	Stainless Steel / Matte Black Epoxy Finish													
Manufacturer	Mediclinics, S.A. (Spain)													
Supplier	Acme Sanitary Ware Co. Ltd Mr. Eric Wong/ Mr. Don Yuen													
Contact Tel/Fax	(852) 2388-7171 / (852) 2710-8012													
E-mail	acme@acmesanitary.com.hk													
Website	www.acmesanitary.com.hk													
<b>General Description</b> <ul style="list-style-type: none"><li>Automatic wall-mounted foam soap dispenser made of stainless steel AISI 304, 0.8 mm thick and with a total capacity of 1 L. Manufactured in four different finishes (white, black, bright and satin).</li><li>They have a functional, robust and trendy design that matches the new range of Mediclinics bathroom accessories. This allows this soap dispenser to blend into any space perfectly.</li><li>Soap dispensers suitable for high traffic facilities and for public use.</li><li>Operates with an AC adapter. Order reference DJ0037A/B/C/CS-TRAFO to receive the automatic soap dispenser able to be connected to the mains with the AC adapter.</li><li>It is recommended to use foam soap with the following characteristics:<ul style="list-style-type: none"><li>-Maximum alcohol content of 80%</li><li>-Density between 0.95 and 1.05 kg / dm3</li></ul></li></ul> <b>It does not support soaps that contain chlorine or solid or abrasive particles.</b> <ul style="list-style-type: none"><li>Screws and plastic plugs to mount on a brick wall supplied.</li></ul>														
 DJF0038A-TRAFO White epoxy finish														
 DJF0038AB-TRAFO Matte black epoxy finish														
 DJF0038AC-TRAFO Bright finish														
 DJF0038ACS-TRAFO Satin finish														
		<b>Technical specifications</b> <table><tr><td>Dimensions</td><td>240 x 110 x 120 mm</td></tr><tr><td>Capacity</td><td>1 L</td></tr><tr><td>Body, cover &amp; base plate thickness</td><td>0.8 mm</td></tr><tr><td>Inner Tank Thickness</td><td>2.5 mm</td></tr><tr><td>Net weight</td><td>1.25 Kg</td></tr><tr><td>Quantity dispensed per pump</td><td>1.5 ml</td></tr></table>	Dimensions	240 x 110 x 120 mm	Capacity	1 L	Body, cover & base plate thickness	0.8 mm	Inner Tank Thickness	2.5 mm	Net weight	1.25 Kg	Quantity dispensed per pump	1.5 ml
Dimensions	240 x 110 x 120 mm													
Capacity	1 L													
Body, cover & base plate thickness	0.8 mm													
Inner Tank Thickness	2.5 mm													
Net weight	1.25 Kg													
Quantity dispensed per pump	1.5 ml													

Note:

\* All information of the above is for the reference only. No prior notice is made if any changes.

Source: Mediclinics, S.A.





## Acme Sanitary Ware Co Ltd

Acme Building, 22-28 Nanking Street, Kowloon, Hong Kong  
Tel: 2388 7171 Fax: 2710 8012  
E-mail: acme@acmesanitary.com.hk  
Website: www.acmesanitaryware.com.hk

PROJECT		REF		REV	ITEM CODE	
LOCATION		DATE			PAGE	

## SANITARY WARE SPECIFICATION SHEET

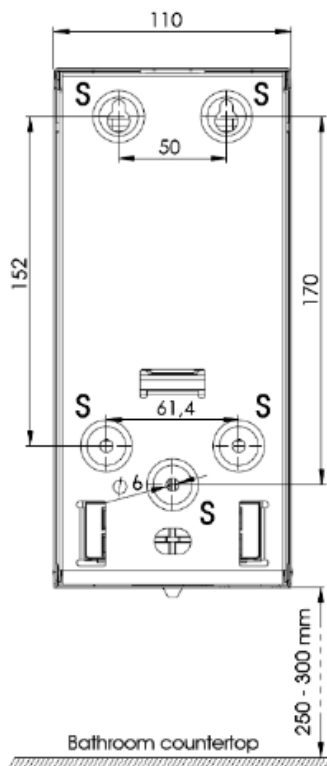
### Components & materials

- **DJF0038A-TRAFO:** Stainless steel AISI 304, white
- **DJF0038AB-TRAFO:** Stainless steel AISI 304, black
- **DJF0038AC-TRAFO:** Stainless steel AISI 304, bright
- **DJF0038ACS-TRAFO:** Stainless steel AISI 304, satin
- **COVER:** made of stainless steel AISI 304, 0.8 mm thick.
- **WALL PLATE:** made of stainless steel AISI 304, 0.8 mm thick. It is mounted on the wall by means of four Ø4 stainless steel screws (provided) with their corresponding Ø 6mm plastic plugs (also provided).
- **INNER PLASTIC TANK:** prevents oxidation and that can be easily removed for cleaning and disinfection purposes.
- **INFRA-REDDETECTION:** with a 5 cm hands detection range.
- **VALVE:** anti-drip corrosion resistant that dispenses 1.0ml of soap per service. This anti-drip valve, which dispenses foam soap, is easily interchangeable with the valves of the other soap dispensers of the same line.
- **HINGED COVER:** for operator convenience and speed of service. Opening on top with provided Mediclinics key that allows soap refill.
- **POWER:** AC adapter. Order reference DJ0037A/B/C/CS-TRAFO to receive the automatic soap dispenser able to be connected to the mains with the electrical transformer.



### Mounting Template

Fix the soap dispenser through the holes of the wall and floor plates, using the stainless steel screws supplied and taking into account the distances of the points indicated by an "S" in the next figure:



### VERY IMPORTANT:

Do not install this soap dispenser inside the shower, as its electrical components can be seriously damaged by water and the dispenser stops working. If you choose the configuration with an electric converter, install it away from any source of water.

### Specifications

Body material (all versions)	Stainless Steel AISI 304
Dimensions	240 x 120 x 120 mm
Soap Tank Capacity	1000 ml
Battery	9V power adapter
Room Temperature	+5°C – +40°C
Dispensed soap quantity	0.6–0.8 ml (foam)

### Note:

\* All information of the above is for the reference only. No prior notice is made if any changes.



Source: Mediclinics, S.A.



## Acme Sanitary Ware Co Ltd

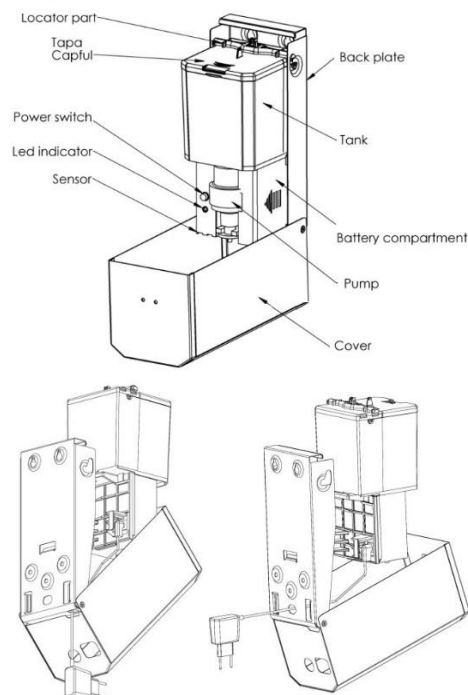
Acme Building, 22-28 Nanking Street, Kowloon, Hong Kong  
Tel: 2388 7171 Fax: 2710 8012  
E-mail: acme@acmesanitary.com.hk  
Website: www.acmesanitaryware.com.hk

PROJECT		REF		REV	ITEM CODE	
LOCATION		DATE			PAGE	

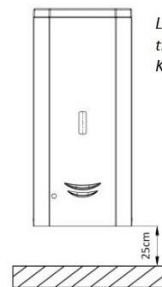
## SANITARY WARE SPECIFICATION SHEET

### Automatic Soap Dispenser Instructions

#### Soap Dispenser components

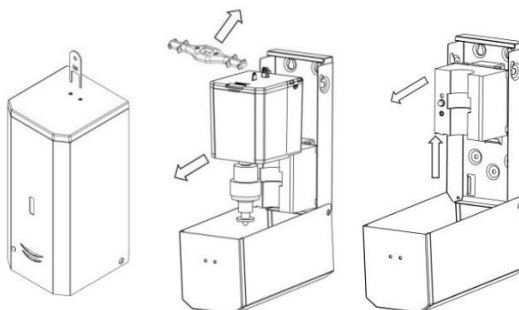


### Installation

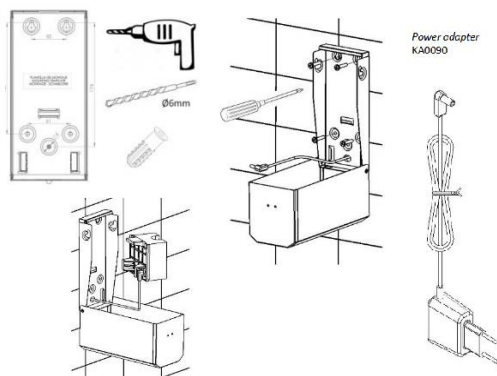


Look for a clean and smooth surface to install the Soap Dispenser  
Keep at least 25cm of free space below the unit

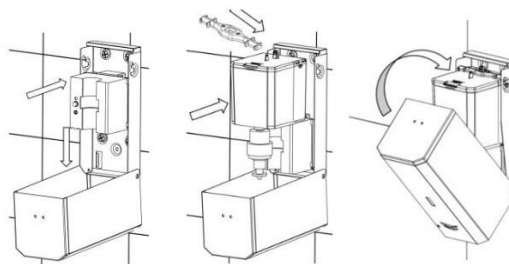
Posicionador  
Locator  
RC9481032SMD



Open the unit with the provided key  
Remove the soap tank locator and the soap tank with the valve  
Remove the mechanism



Drill the wall using the provided mounting template  
Route the cable through one of the provided holes if you are using the power adaptor  
Firmly screw the unit to the wall (screw bag included)



Reassembly the mechanism, the soap tank with the valve and the soap tank locator  
Close the unit

### Note:

\* All information of the above is for the reference only. No prior notice is made if any changes.

Source: Mediclinics, S.A.

